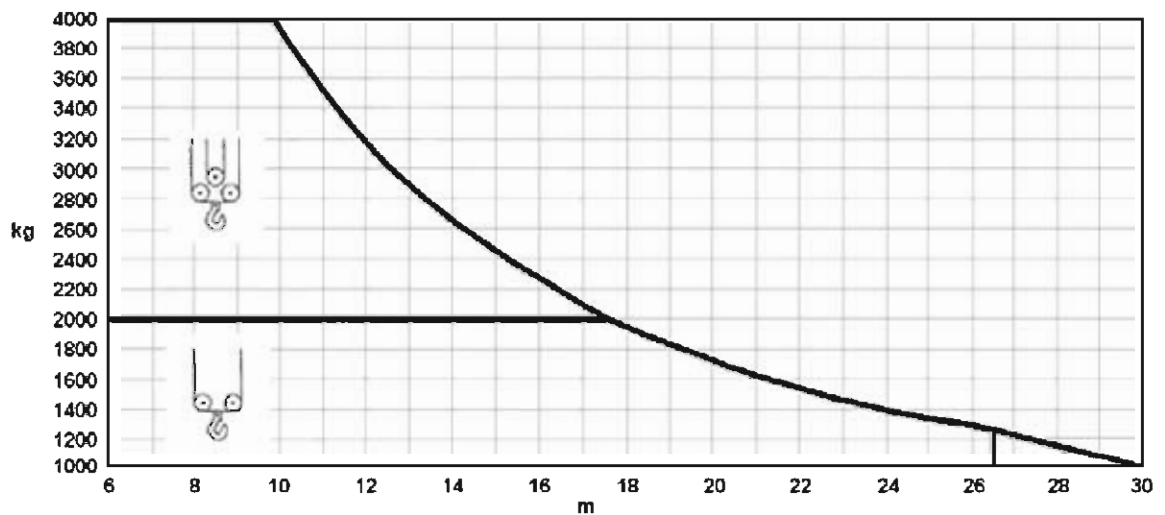
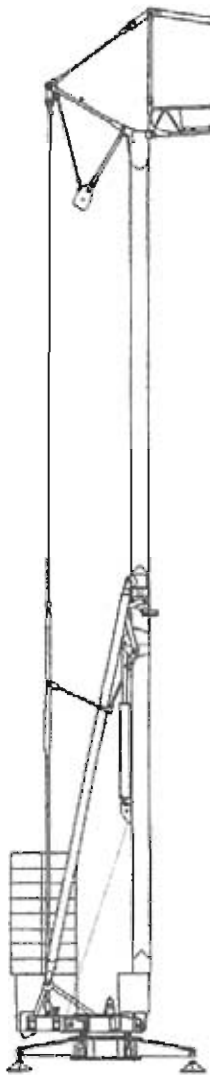
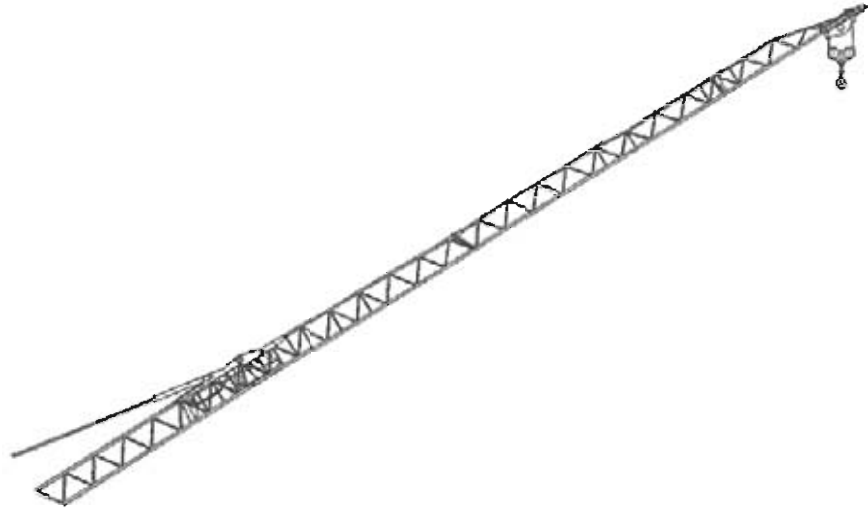


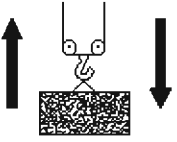
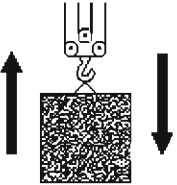
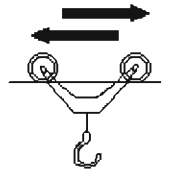
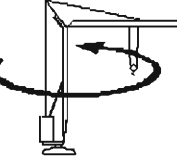
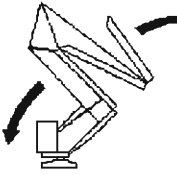



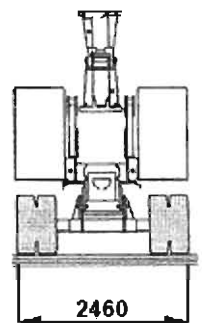
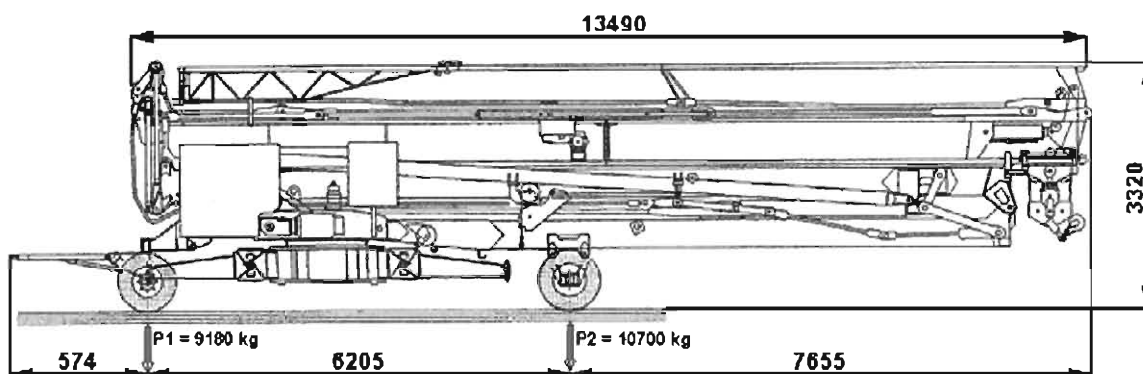
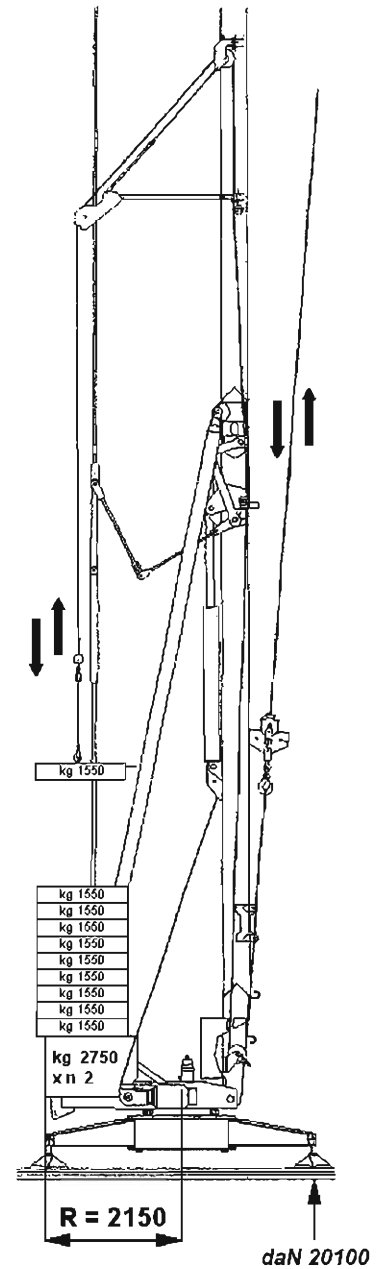
VC 30 Self Erecting Tower Crane



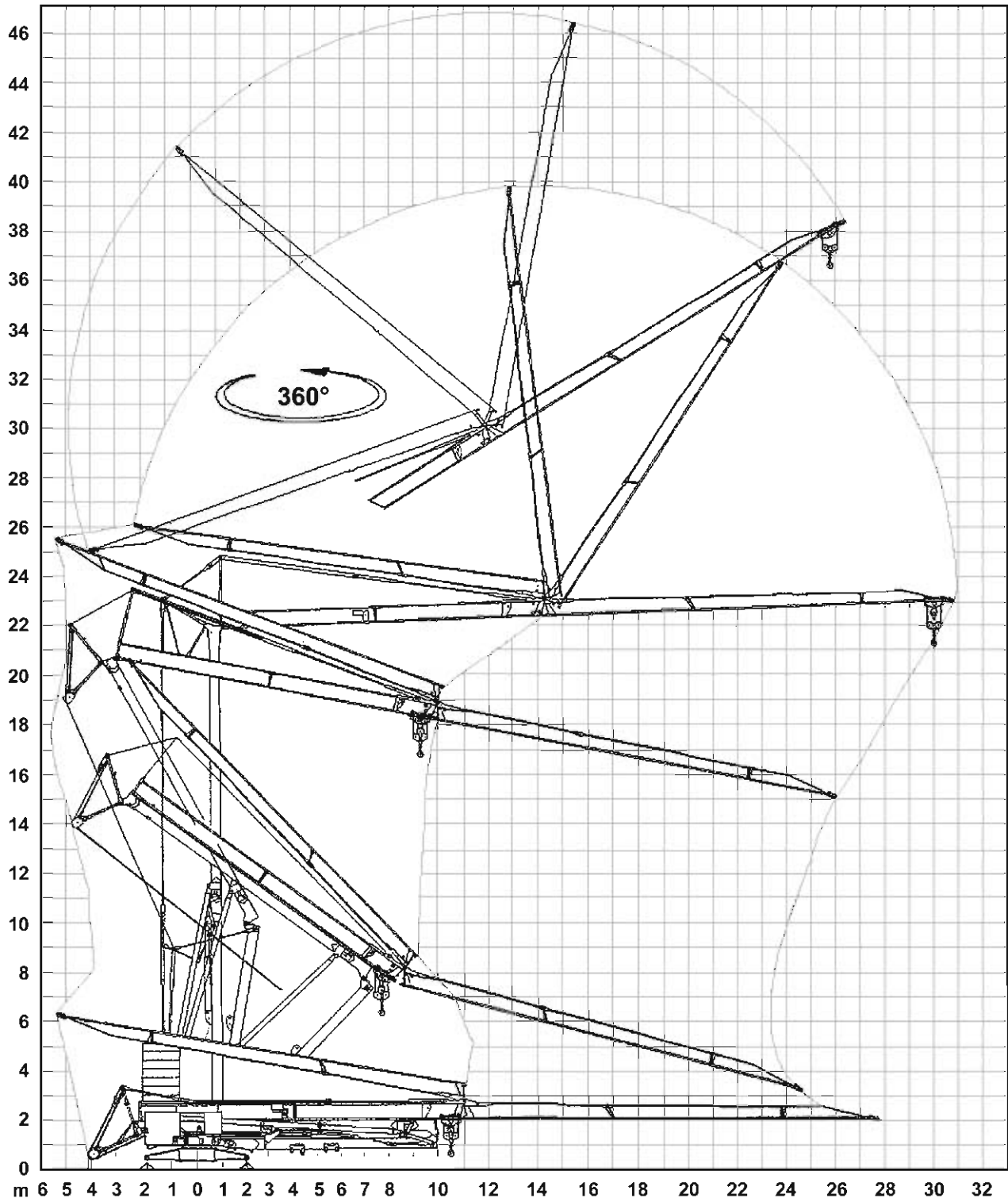
VC 30

Self Erecting Tower Crane

 50 Hz V + 6% - 10%	 380V - 20kVA		
 m/l' kg kW	▶	▶▶	▶▶▶
	5	21	42
	2000	2000	1000
 m/l' kg kW	▶	▶▶	▶▶▶
	2.5	10.5	21
	4000	4000	2000
 m/l' kW	▶	▶▶	
	18	36	
 rpm kW	▶	▶▶	▶▶▶
	0.2	0.45	0.9
 min kW		▶	
		10	
 kg	14380		



VC 30 Self Erecting Tower Crane



STANDARD FEATURES

3-speed lifting and rotation with electronic control, galvanised structure, installation counterweight, operation with folded jib, cable-operated pushbutton remote control, guard for slewing ring and mechanisms, designed to allow installation of self-ballasting device and radio control, stainless steel electrical cabinet, documentation in accordance with EU standards.