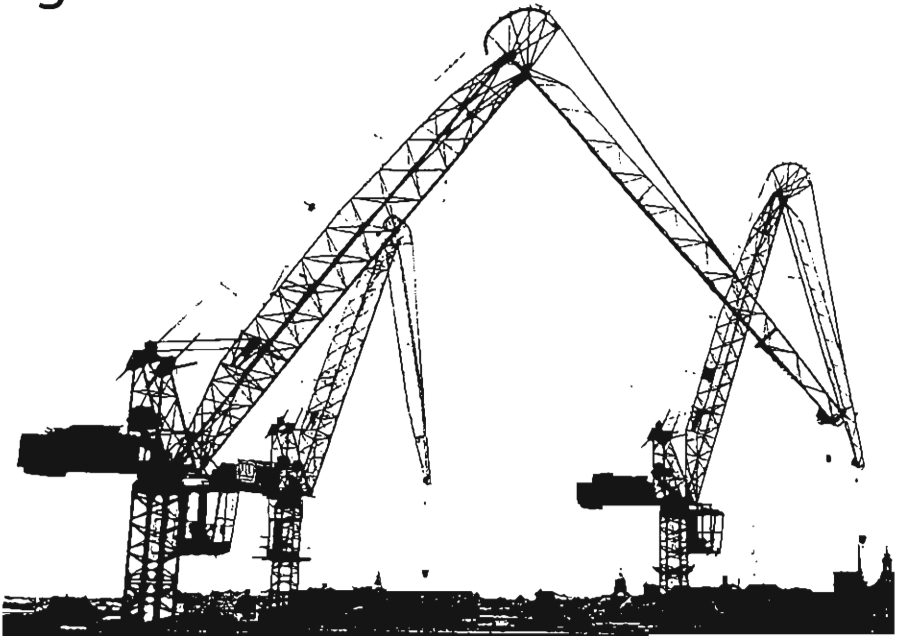


## Magni S46



### SPEEDS

Hoisting speed, 4 steps	m/min	8 – 81
Lowering speed, 4 steps	m/min	5 – 78
Jack-knife motion, in-out 4 steps	m/min	6 – 42
Slewing speed, 3 steps	r.p.m.	0,3 – 1,0
Rail undercarriage, traveling speed	m/min	18

### RADIUS COUNTER WEIGHT BRIDGE

–with steel counter weight	m	4,6
–with concrete counter weight	m	5,1

### MEASUREMENTS and WEIGHTS

Max. height of hook without braces with standard crane tower, (width 1200 mm)	m	23,3
Max. height of hook without braces with tower width 1800 mm	m	43,0
Total weight incl. crane foot and counterweight (hook height 12,1 m)	ton	18,9
Counterweight	ton	4,6

### ELECTRICAL CONNECTION

Power required	kW	35
Power with rail undercarriage	kW	40
Connection voltage	3 x 380 Volt, 50 Hz	

### RAIL UNDERCARRIAGE

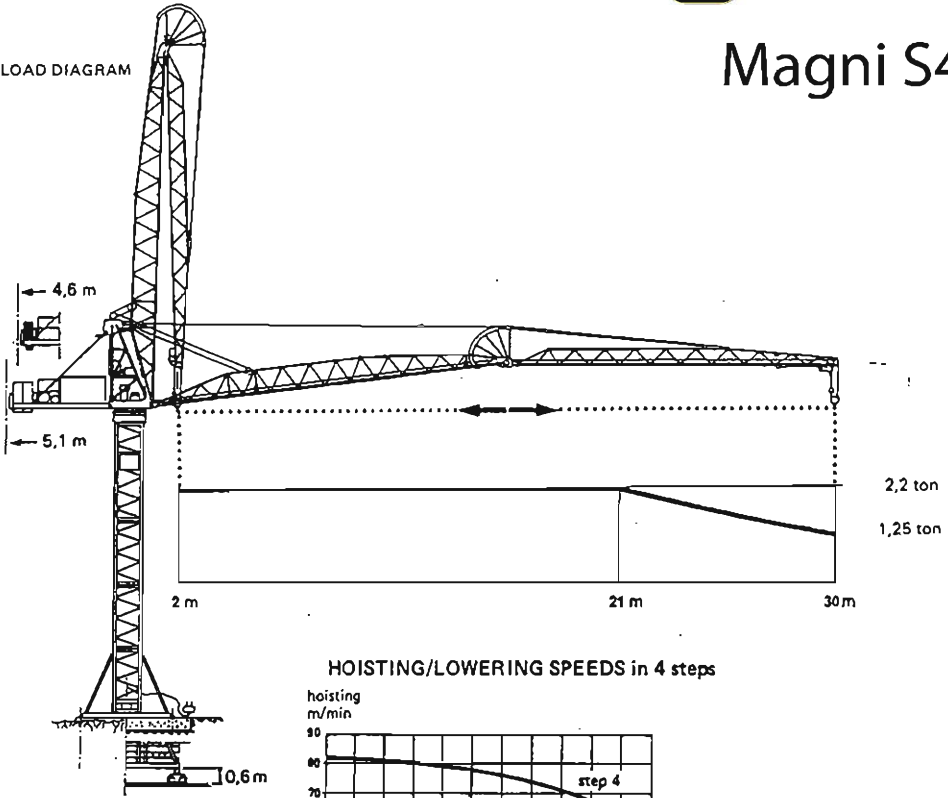
Track gauge	m	4,4
Wheel base c-c bogie	m	4,4
Curve radius, minimum	m	6,0
Width	m	5,1
Length	m	5,85
Height from upper edge of rail to lower edge of crane foot	m	0,6
Weight of rail undercarriage without counterweights	ton	3,7
Counterweights at 12,7 m hook height	ton	24

### MOTORS

Hoist, Ward-Leonard	kW	19,5
Boom raise, Ward-Leonard	kW	19,5
Slew	kW	4
Rail travel	kW	2 X 2

## Magni S46

LOAD DIAGRAM



HOISTING/LOWERING SPEEDS in 4 steps

