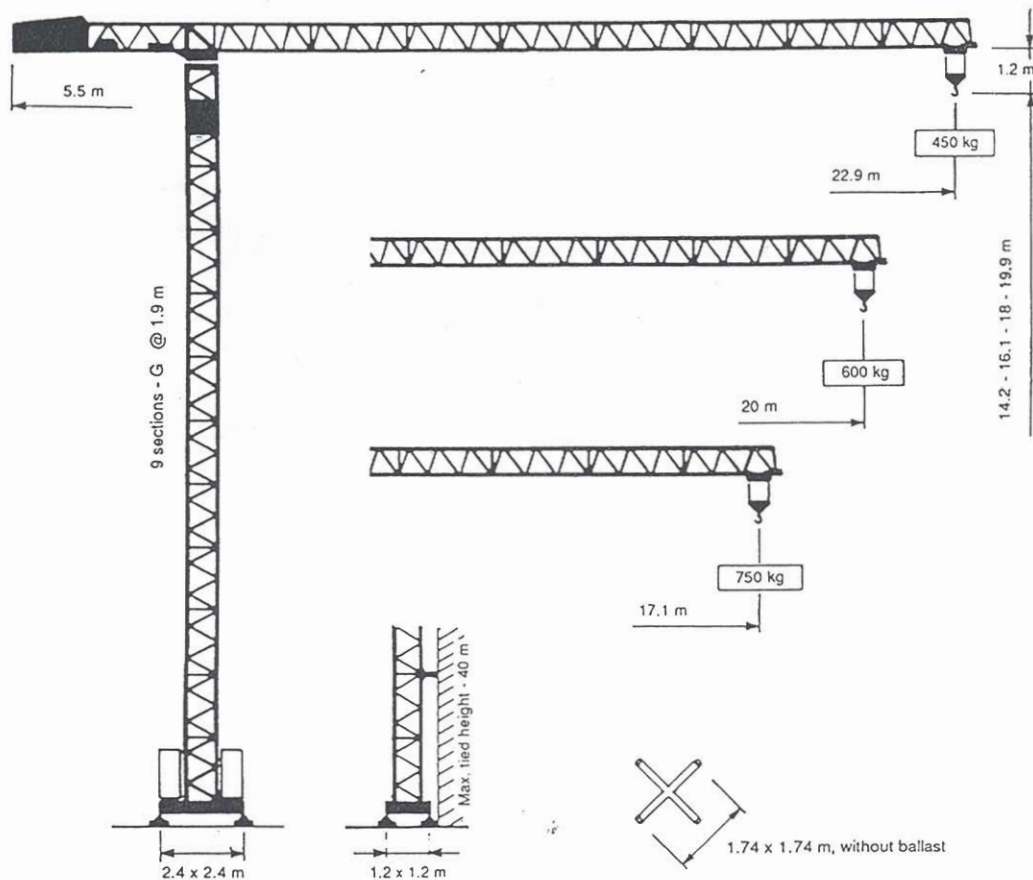


Ferro F6.20



⚙	Kg	1300	1200	1100	1000	900	800	750	600	450
22.9 m JIB LENGTH	m	9.1	9.7	10.5	11.5	12.6	14.0	14.6	17.9	22.9
20.0 m JIB LENGTH	m	10.1	10.9	11.7	12.8	14.0	15.5	16.2	20.0	
17.1 m JIB LENGTH	m	10.5	11.3	12.2	13.3	14.6	16.2	17.1		
14.3 m JIB LENGTH	m	10.3	11.0	12.0	13.0	14.3				
11.45 m JIB LENGTH	m	10.25	10.6	11.45						

FUNCTION			STANDARD			FUNCTION			HP
			m/min	Kg	HP				
LIFTING HOIST			36	750	7	SLEWING		0.3 - 0.9 rpm	1.5 Kgm
			9	1300	3				
ERECTION					2	TRAVELLING		25 m/min	2 x 1
						JIB TROLLEY		32 m/min	1

NECESSARY ELECTRICAL POWER 14 KVA

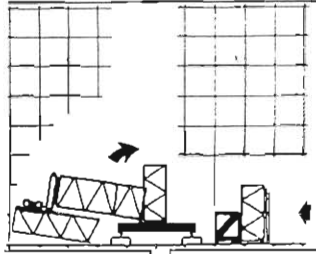
THREE PHASE SUPPLY 380 V 60 Hz

WEIGHT OF CRANE WITHOUT BALLAST 5T

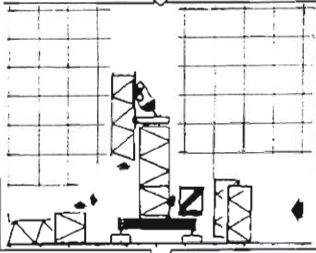
Ferro F6.20

Hand
erects
in a
small
space...

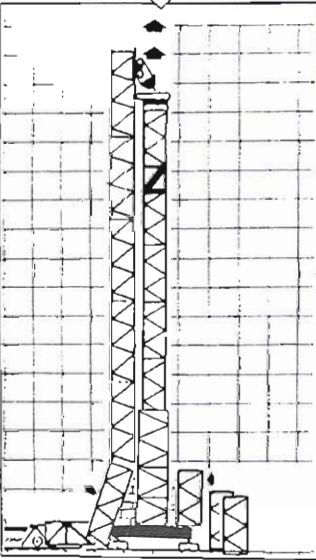
...or in a short time with
a lorry mounted crane.



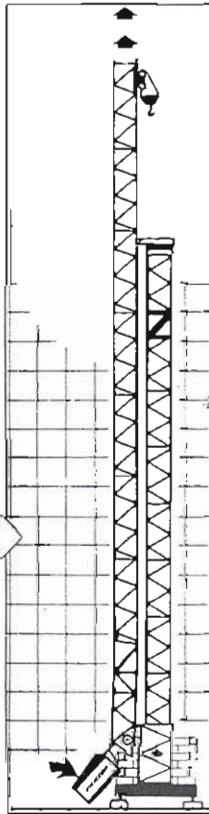
STAGE 2



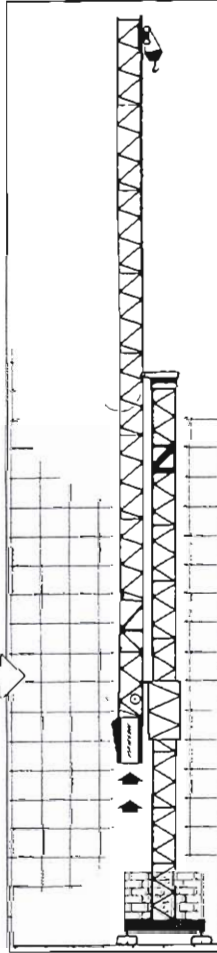
STAGE 3



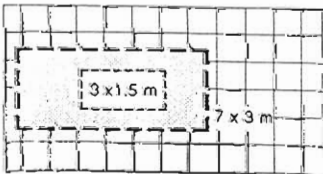
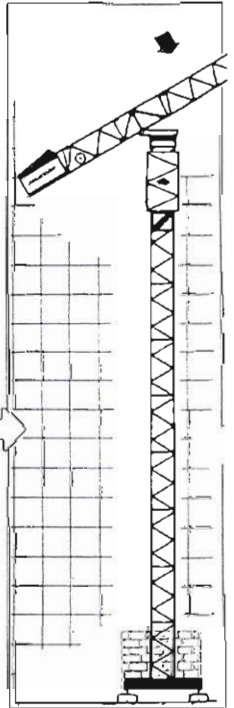
STAGE 4



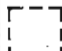

STAGE 5



STAGE 6



Grid squares represent 1 m.

-  GROUND AREA REQUIRED
-  ERECTION AREA REQUIRED